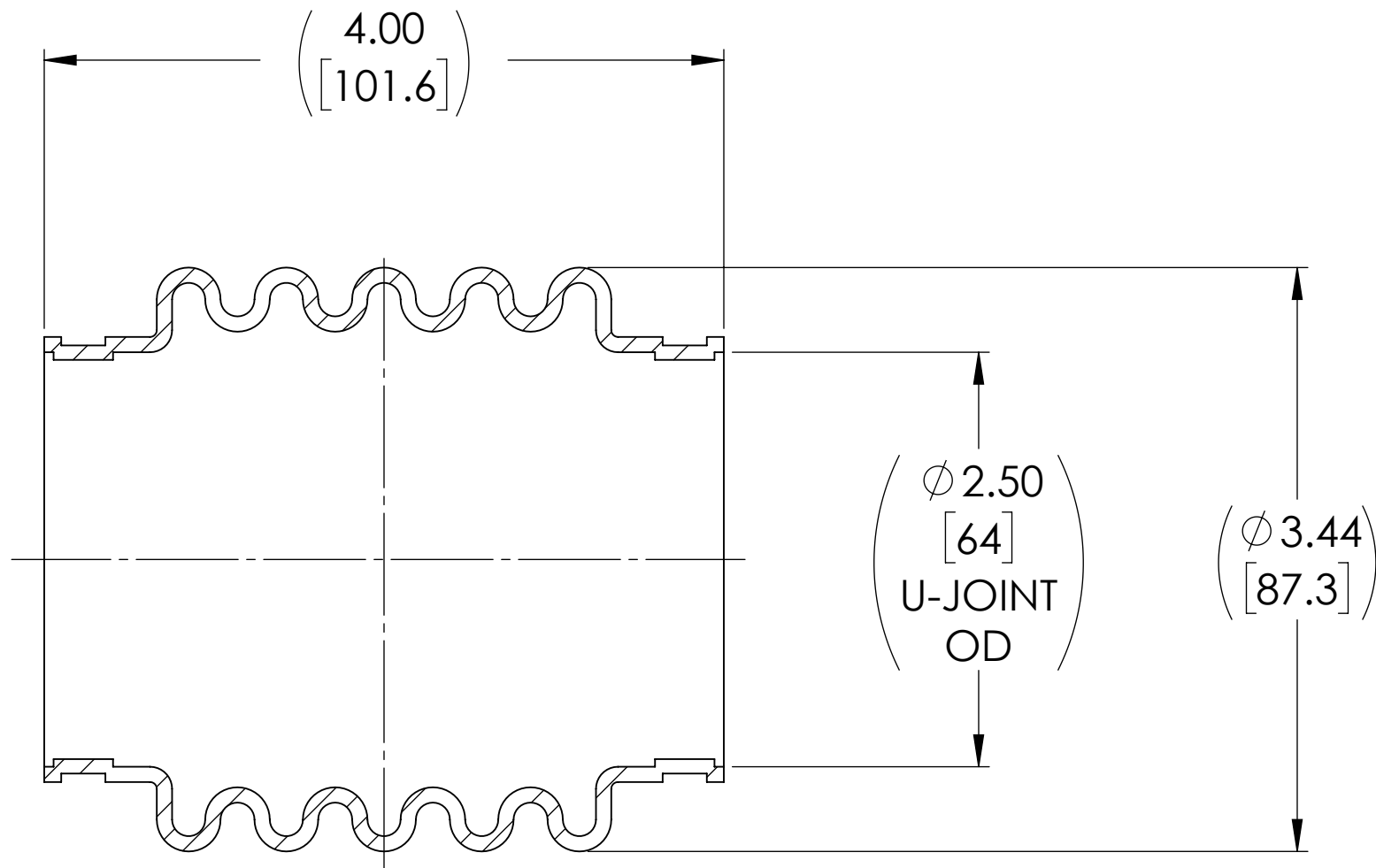
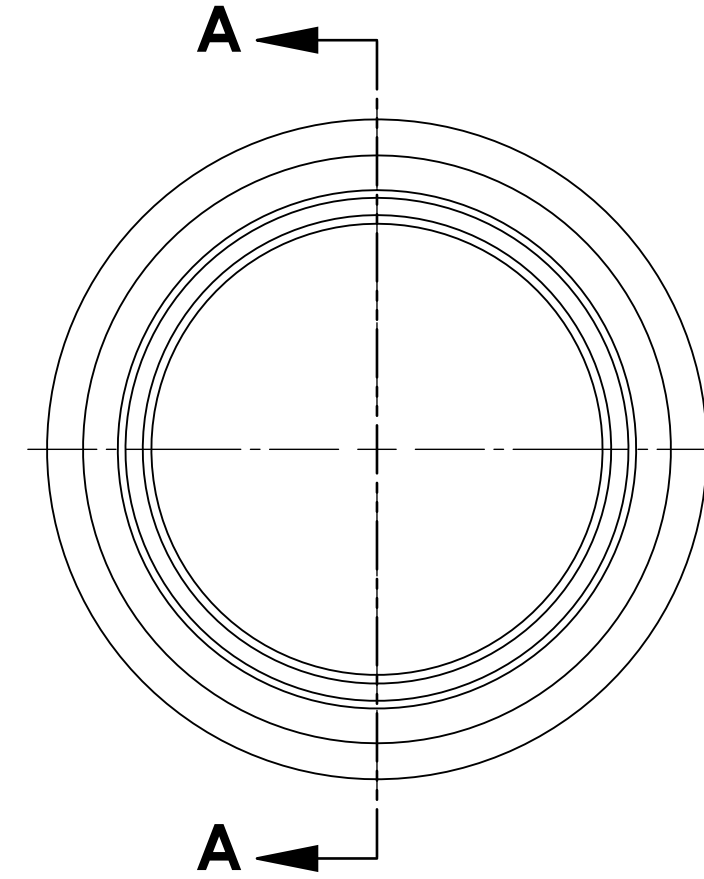


# APPROVED

REVISIONS				
ZONE	REV.	DESCRIPTION	DATE	APPROVED
	A	INITIAL RELEASE	2/17/2021	JP



**SECTION A-A**



NOTE(s), UNLESS OTHERWISE SPECIFIED.

- (1) MATERIAL: NITRILE
  - a. COLOR: BLACK
  - b. DUROMETER:  $50 \pm 5$  (SHORE A SCALE).

DO NOT SCALE DRAWING

UNLESS OTHERWISE SPECIFIED CHAMFER ALL HOLES BREAK ALL SHARP CORNERS DE-BURR ALL FEATURES  TURNED SURFACES: $\checkmark_{63}$ MILLED SURFACES: $\checkmark_{125}$  <b>PROPRIETARY AND CONFIDENTIAL</b> THE INFORMATION CONTAINED IN THIS DRAWING IS THE SOLE PROPERTY OF BELDEN UNIVERSAL. ANY REPRODUCTION IN PART OR AS A WHOLE WITHOUT THE WRITTEN PERMISSION OF BELDEN UNIVERSAL IS PROHIBITED.	STANDARD TOLERANCES, UNLESS OTHERWISE SPECIFIED  DIMENSIONS ARE IN INCHES [mm] ANGULAR MACHINED: $\pm 1.0^\circ$ FRACTIONAL: $\pm .015"$ TWO PLACE DECIMAL: $\pm .010"$ THREE PLACE DECIMAL: $\pm .005"$ FOUR PLACE DECIMAL: $\pm .0005"$ CONCENTRICITY: $.0025"$ T.I.R.	MATERIAL SEE NOTES  HEAT TREAT  FINISH SEE NOTES	INITIALS DATE DRAWN JP 17FEB21 CHECKED RNK 03/08/2021 ENG APPR. RNK 03/12/2021 MFG APPR. QC APPR.	Belden Universal <a href="http://www.beldenuniversal.com">www.beldenuniversal.com</a>  TITLE: <h2 style="text-align: center;">BOOT</h2>	
	ALL HOLES TO BE LOCATED ON CENTERLINE (☉) WITHIN .005" T.I.R.  INTERPRET GEOMETRIC TOLERANCES I.A.W. ASME Y14.5		COMMENTS:		
	SIZE <b>A</b>	DWG. NO. <b>2500 BOOT</b>	REV <b>A</b>		
	SCALE: 1:1	WT (Lbs): 0.179	SHEET 1 OF 1		