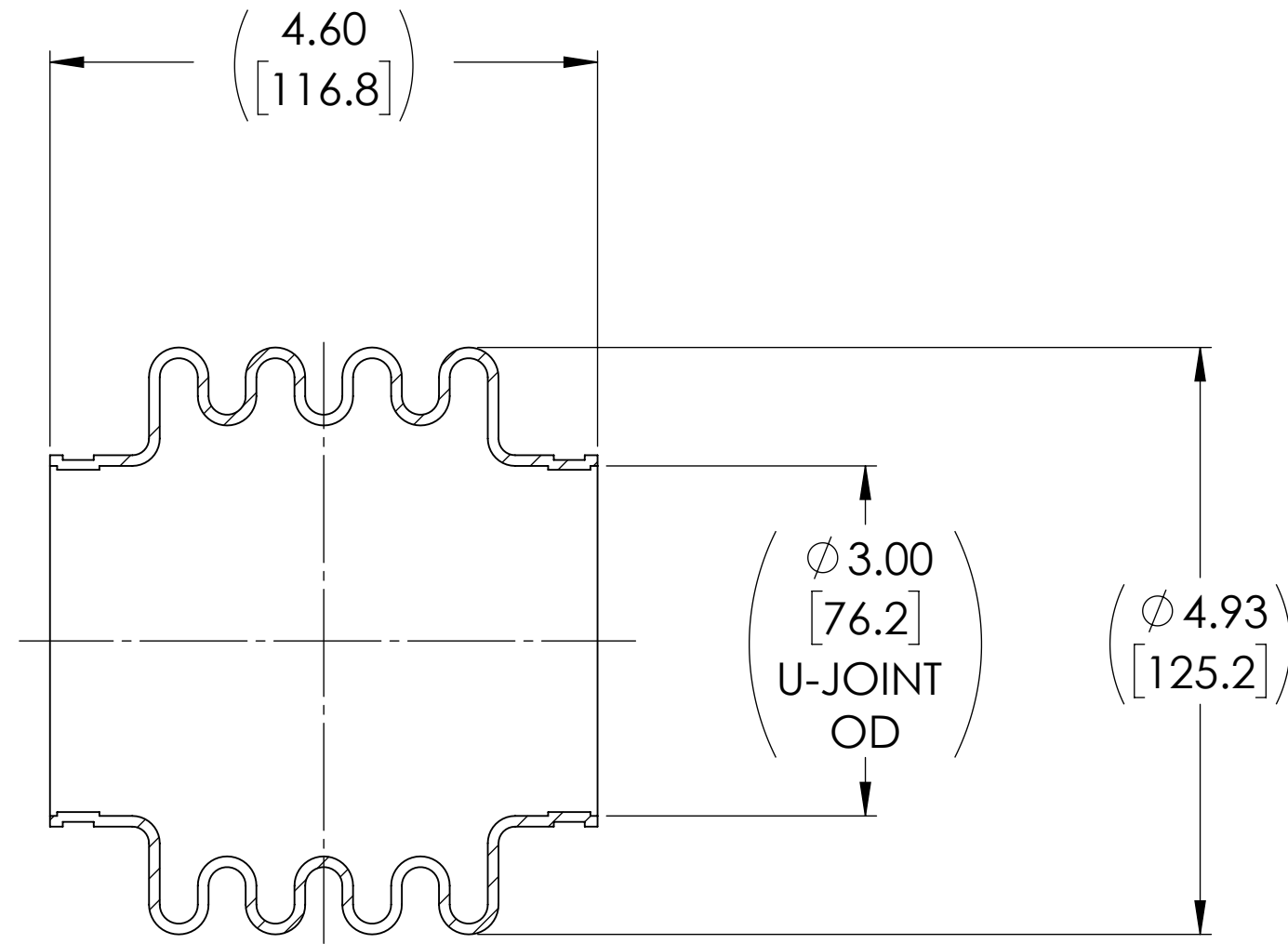
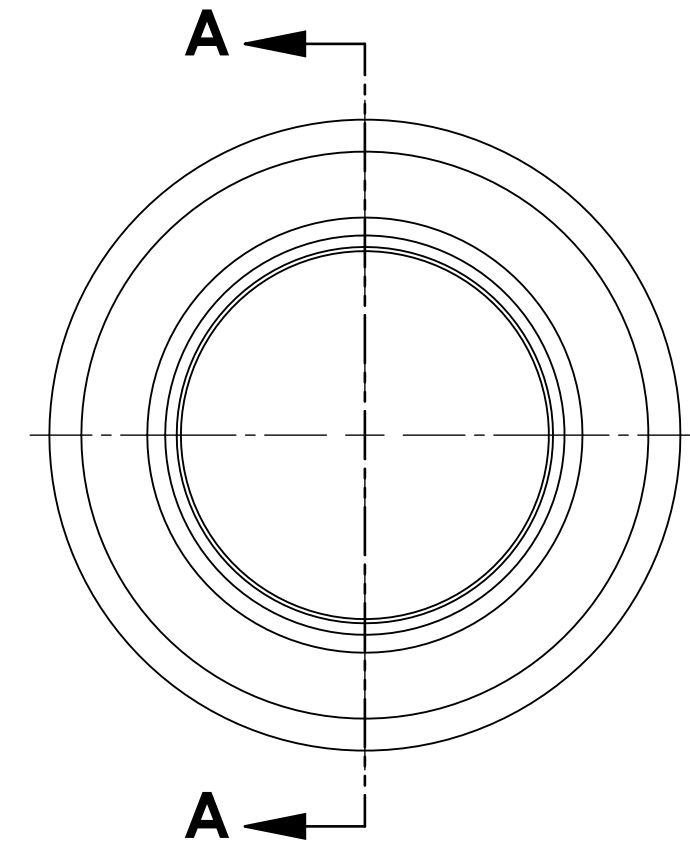


APPROVED

REVISIONS				
ZONE	REV.	DESCRIPTION	DATE	APPROVED
	A	INITIAL RELEASE	2/24/2021	JP



SECTION A-A



NOTE(s), UNLESS OTHERWISE SPECIFIED.

- (1) MATERIAL: NITRILE
 - a. COLOR: BLACK
 - b. DUROMETER: 50 ± 5 (SHORE A SCALE).

DO NOT SCALE DRAWING

UNLESS OTHERWISE SPECIFIED CHAMFER ALL HOLES BREAK ALL SHARP CORNERS DE-BURR ALL FEATURES TURNED SURFACES: $\sqrt{63}$ MILLED SURFACES: $\sqrt{125}$ PROPRIETARY AND CONFIDENTIAL THE INFORMATION CONTAINED IN THIS DRAWING IS THE SOLE PROPERTY OF BELDEN UNIVERSAL. ANY REPRODUCTION IN PART OR AS A WHOLE WITHOUT THE WRITTEN PERMISSION OF BELDEN UNIVERSAL IS PROHIBITED.	STANDARD TOLERANCES, UNLESS OTHERWISE SPECIFIED DIMENSIONS ARE IN INCHES [mm]	MATERIAL SEE NOTES HEAT TREAT	INITIALS DATE	Belden Universal www.beldenuniversal.com TITLE: BOOT, NITRILE	
	ANGULAR MACHINED: $\pm 1.0^\circ$ FRACTIONAL: $\pm .015"$ TWO PLACE DECIMAL: $\pm .010"$ THREE PLACE DECIMAL: $\pm .005"$ FOUR PLACE DECIMAL: $\pm .0005"$ CONCENTRICITY: $.0025"$ T.I.R.	ALL HOLES TO BE LOCATED ON CENTERLINE (☺) WITHIN $.005"$ T.I.R. INTERPRET GEOMETRIC TOLERANCES I.A.W. ASME Y14.5	DRAWN: JP 24FEB21 CHECKED: RNK 03/08/2021 ENG APPR.: RNK 03/12/2021 MFG APPR.: QC APPR.:		COMMENTS:
	FINISH SEE NOTES	SIZE A	DWG. NO. 3000 BOOT		REV A
	SCALE: 1:1.5 WT (Lbs): 0.343 SHEET 1 OF 1				