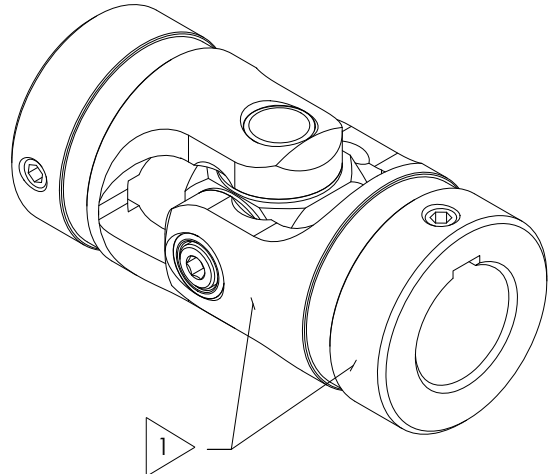


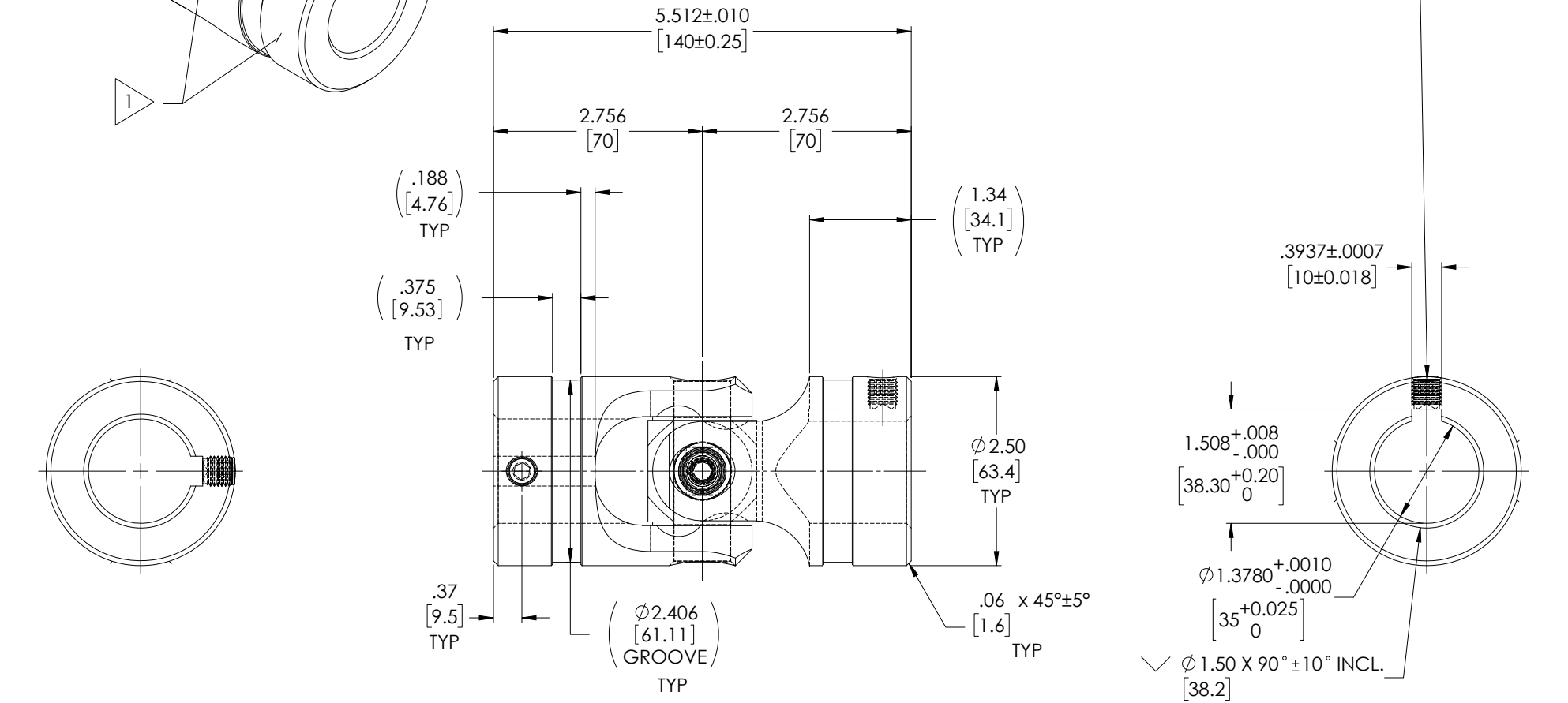
APPROVED

FOR REFERENCE ONLY

| REVISIONS | | | | |
|-----------|------|-----------------|-----------|----------|
| ZONE | REV. | DESCRIPTION | DATE | APPROVED |
| | A | INITIAL RELEASE | 6/28/2019 | JP |



SOCKET SET SCREW, M10x1.5 x 10mm, CUP POINT, ALLOY STEEL 2X



TYPICAL BOTH ENDS

NOTE(s), UNLESS OTHERWISE SPECIFIED.

- 1 MARK ASSEMBLY w/ "BELDEN" LOGO, PART NUMBER, REVISION LEVEL (IF ANY), DATE OF MANUFACTURE, & BELDEN JOB NUMBER.
- (2) LUBRICATE w/ LUBRIPLATE PRODUCT No. 1200-2, NLGI GRADE 2, AW/EP, LITHIUM GREASE.
- (3) TORQUE M8x1.25 SOCKET HEAD CAP SCREW TO 20 FT-LBS.
- (4) REF., MAXIMUM OPERATION ANGLE: 45°.

DO NOT SCALE DRAWING

| | | | | |
|---|---|--|---|---|
| UNLESS OTHERWISE SPECIFIED CHAMFER ALL HOLES BREAK ALL SHARP CORNERS DE-BURR ALL FEATURES TURNED SURFACES: $\sqrt{63}$ MILLED SURFACES: $\sqrt{125}$ PROPRIETARY AND CONFIDENTIAL THE INFORMATION CONTAINED IN THIS DRAWING IS THE SOLE PROPERTY OF BELDEN UNIVERSAL. ANY REPRODUCTION IN PART OR AS A WHOLE WITHOUT THE WRITTEN PERMISSION OF BELDEN UNIVERSAL IS PROHIBITED. | STANDARD TOLERANCES, UNLESS OTHERWISE SPECIFIED DIMENSIONS ARE IN [mm] ANGULAR MACHINED: $\pm 1.0^\circ$ FRACTIONAL: $\pm 0.15^\circ$ TWO PLACE DECIMAL: $\pm 0.10^\circ$ THREE PLACE DECIMAL: $\pm 0.005^\circ$ FOUR PLACE DECIMAL: $\pm 0.0005^\circ$ CONCENTRICITY: 0.0025 T.I.R. | MATERIAL: ALLOY STEEL HEAT TREAT: SEE DETAILS FINISH: NONE | INITIALS: JP DATE: 28 JUN 19 CHECKED: RNK DATE: 07/22/2019 ENG APPR: RNK DATE: 09/06/2019 MFG APPR: QC APPR: | Belden Incorporated www.beldenuniversal.com TITLE: ASSEMBLY, UNIVERSAL JOINT SIZE: DWG. NO. A UJ-HD2500x35K-140 SCALE: 1:1 WT (Lbs): 4.612 SHEET 1 OF 2 |
| | ALL HOLES TO BE LOCATED ON CENTERLINE (C) WITHIN .005" T.I.R. INTERPRET GEOMETRIC TOLERANCES I.A.W. ASME Y14.5 | COMMENTS: | | |
| | REVISIONS: | | | REV: A |
| | FORM SW-A 5-18 8 | | | |