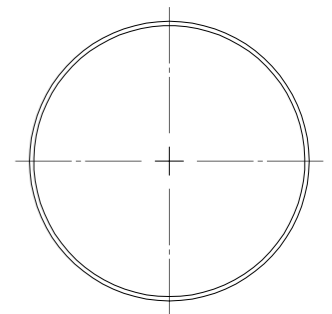
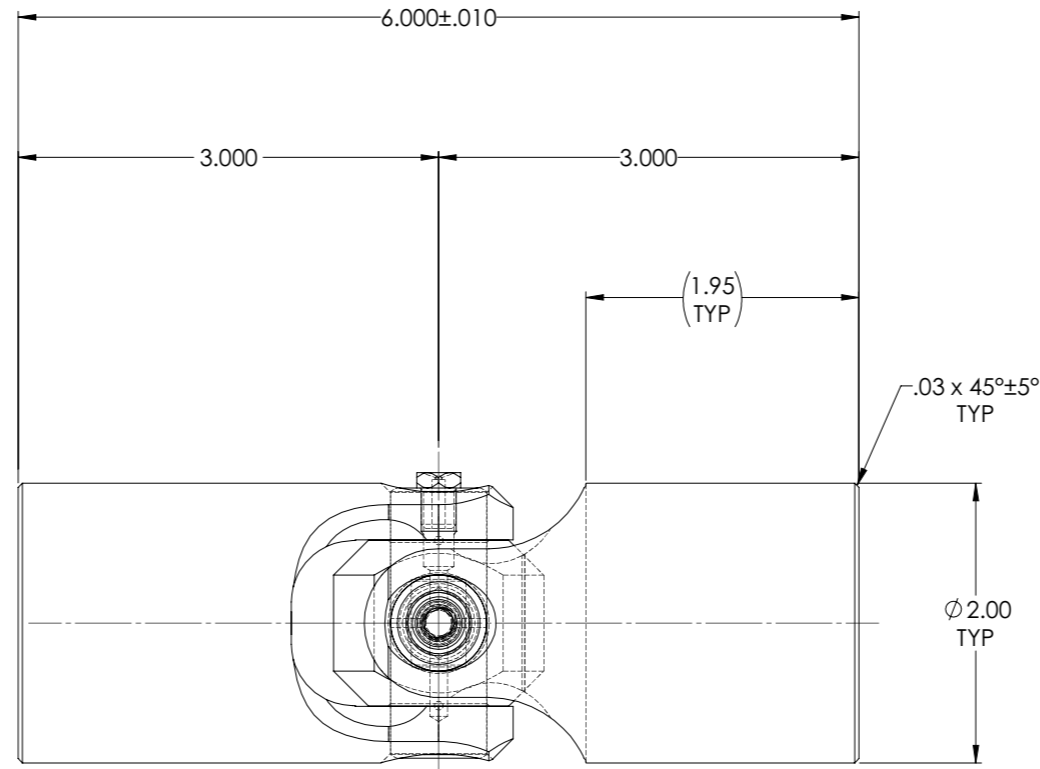
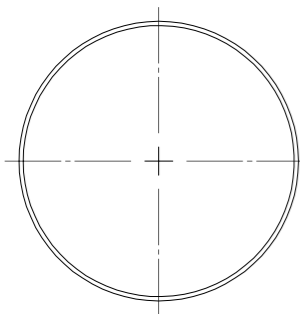
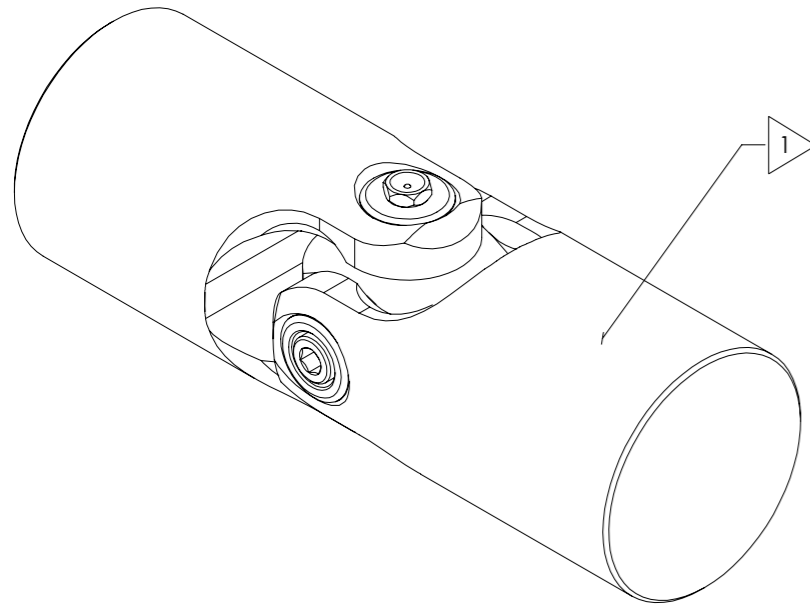


APPROVED

REVISIONS				
ZONE	REV.	DESCRIPTION	DATE	APPROVED

INFORMATION IN THIS DRAWING
PROVIDED FOR REFERENCE ONLY



NOTE(s), UNLESS OTHERWISE SPECIFIED.

1 MARK ASSEMBLY w/ "BELDEN" LOGO, PART NUMBER, REVISION LEVEL (IF ANY), DATE OF MANUFACTURE, & BELDEN JOB No.

(2) LUBRICATE WITH LUBRIPLATE® PRODUCT No. 3000 NLGI GRADE 2, AW/EP, MOLY-LITHIUM GREASE.

3 TORQUE Ø1/4-28 SOCKET HEAD CAP SCREW TO 20 FT-LBS.

DO NOT SCALE DRAWING

UNLESS OTHERWISE SPECIFIED CHAMFER ALL HOLES BREAK ALL SHARP CORNERS DE-BURR ALL FEATURES TURNED SURFACES: $\sqrt{63}$ MILLED SURFACES: $\sqrt{125}$	STANDARD TOLERANCES, UNLESS OTHERWISE SPECIFIED DIMENSIONS ARE IN INCHES [mm]		MATERIAL:	INITIALS	DATE	Belden Incorporated www.beldenuniversal.com ASSEMBLY, UNIVERSAL JOINT	
	FRACTIONAL: ±.015" TWO PLACE DECIMAL: ±.010" THREE PLACE DECIMAL: ±.005" FOUR PLACE DECIMAL: ±.0005" CONCENTRICITY: .0025" T.I.R.		ALLOY STEEL	DRAWN	RNK		01MAY96
	ANGULAR MACHINED: ±1.0° ALL HOLES TO BE LOCATED ON CENTERLINE (⌀) WITHIN .005" T.I.R. INTERPRET GEOMETRIC TOLERANCES I.A.W. ASME Y14.5		HEAT TREAT:	CHECKED	RNK		01MAY96
	PROPRIETARY AND CONFIDENTIAL THE INFORMATION CONTAINED IN THIS DRAWING IS THE SOLE PROPERTY OF BELDEN INCORPORATED. ANY REPRODUCTION IN PART OR AS A WHOLE WITHOUT THE WRITTEN PERMISSION OF BELDEN INCORPORATED IS PROHIBITED.		SEE DETAIL DRAWINGS	ENG APPR.	RNK		01MAY96
			NONE	QUALITY		TITLE: SIZE DWG. NO. B UJ-HS2000 REV F SCALE: 1.5:1 WEIGHT (Lbs): 4.533 SHEET 1 OF 2	