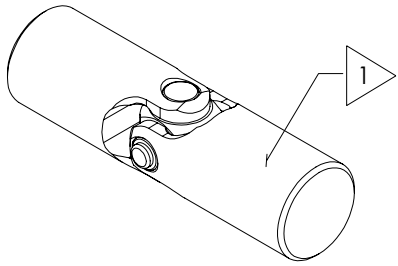


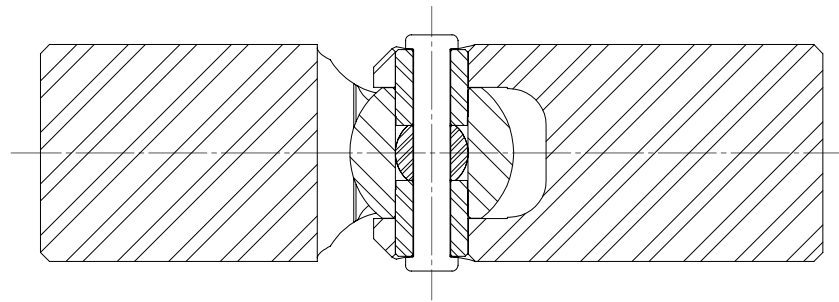
# APPROVED

REVISIONS				
ZONE	REV.	DESCRIPTION	DATE	APPROVED

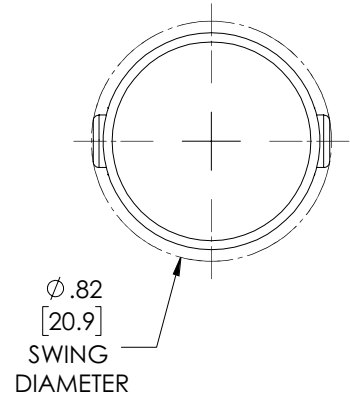
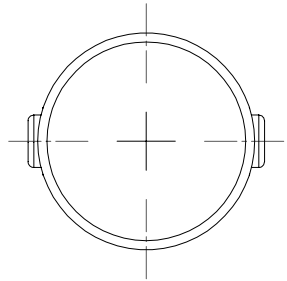
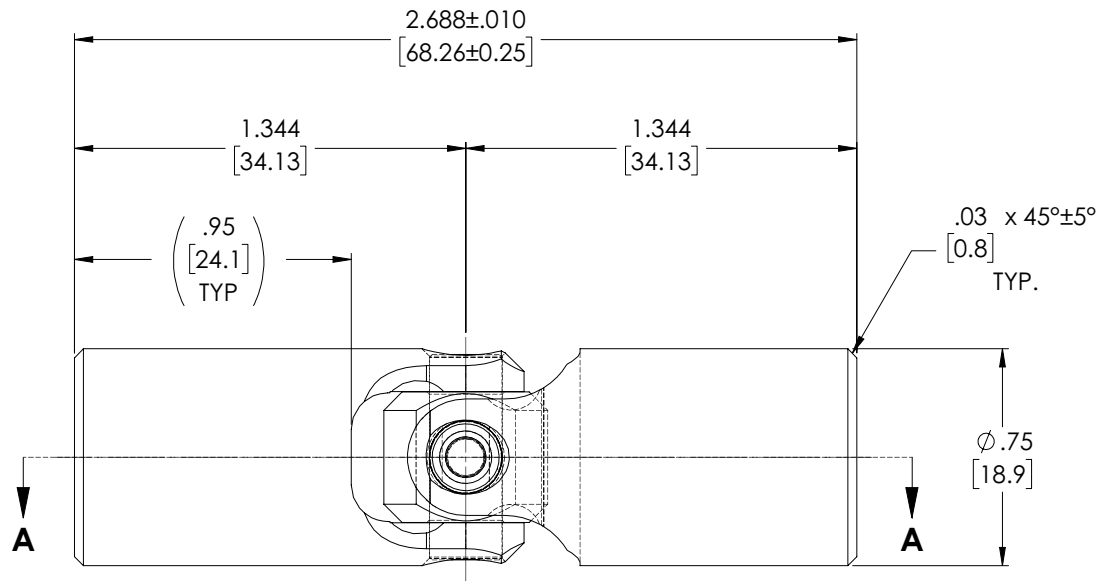
INFORMATION IN THIS DRAWING  
PROVIDED FOR REFERENCE ONLY



SCALE 1.5 : 1



SECTION A-A



NOTE(S), UNLESS OTHERWISE SPECIFIED.

1 MARK ASSEMBLY w/ "BELDEN" LOGO, PART/DWG No., REVISION LEVEL, DATE OF MANUFACTURE (MO/YR) & BELDEN JOB No.

(2) LUBRICATE w/ LUBRIPLATE No. 1200-2, NLGI GRADE 2, AW/EP, LITHIUM GREASE OR EQUIVALENT.

DO NOT SCALE DRAWING

UNLESS OTHERWISE SPECIFIED CHAMFER ALL HOLES BREAK ALL SHARP CORNERS DE-BURR ALL FEATURES TURNED SURFACES: $\checkmark$ <sub>63</sub> MILLED SURFACES: $\checkmark$ <sub>125</sub> <b>PROPRIETARY AND CONFIDENTIAL</b> THE INFORMATION CONTAINED IN THIS DRAWING IS THE SOLE PROPERTY OF BELDEN UNIVERSAL. ANY REPRODUCTION IN PART OR AS A WHOLE WITHOUT THE WRITTEN PERMISSION OF BELDEN UNIVERSAL IS PROHIBITED.	STANDARD TOLERANCES, UNLESS OTHERWISE SPECIFIED DIMENSIONS ARE IN INCHES [mm]	MATERIAL ALLOY STEEL	INITIALS RNK	DATE 28JUL04	<b>Belden Universal</b> <a href="http://www.beldenuniversal.com">www.beldenuniversal.com</a> TITLE: <b>ASSEMBLY,          UNIVERSAL JOINT,          HIGH STRENGTH</b>
	ANGULAR MACHINED: ±1.0° FRACTIONAL: ±.015° TWO PLACE DECIMAL: ±.010° THREE PLACE DECIMAL: ±.005° FOUR PLACE DECIMAL: ±.0005° CONCENTRICITY: .0025" T.I.R.	HEAT TREAT SEE DETAIL DRAWINGS	DRAWN RNK	28JUL04	
	ALL HOLES TO BE LOCATED ON CENTERLINE (ϕ) WITHIN .005" T.I.R. INTERPRET GEOMETRIC TOLERANCES I.A.W. ASME Y14.5	FINISH NONE	CHECKED RNK	28JUL04	
	COMMENTS:	QC APPR.	MFG APPR.	DATE	
SIZE <b>A</b>	DWG. NO. <b>UJ-HS750</b>	REV <b>A</b>	SCALE: 3:1	WT (Lbs): 0.291	SHEET 1 OF 2