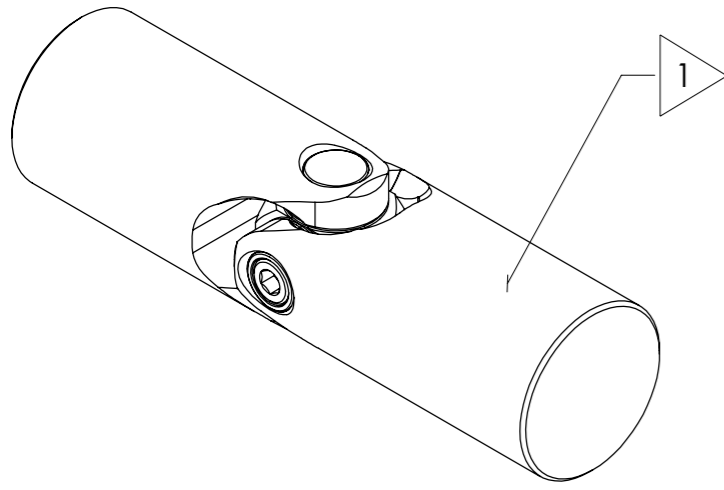


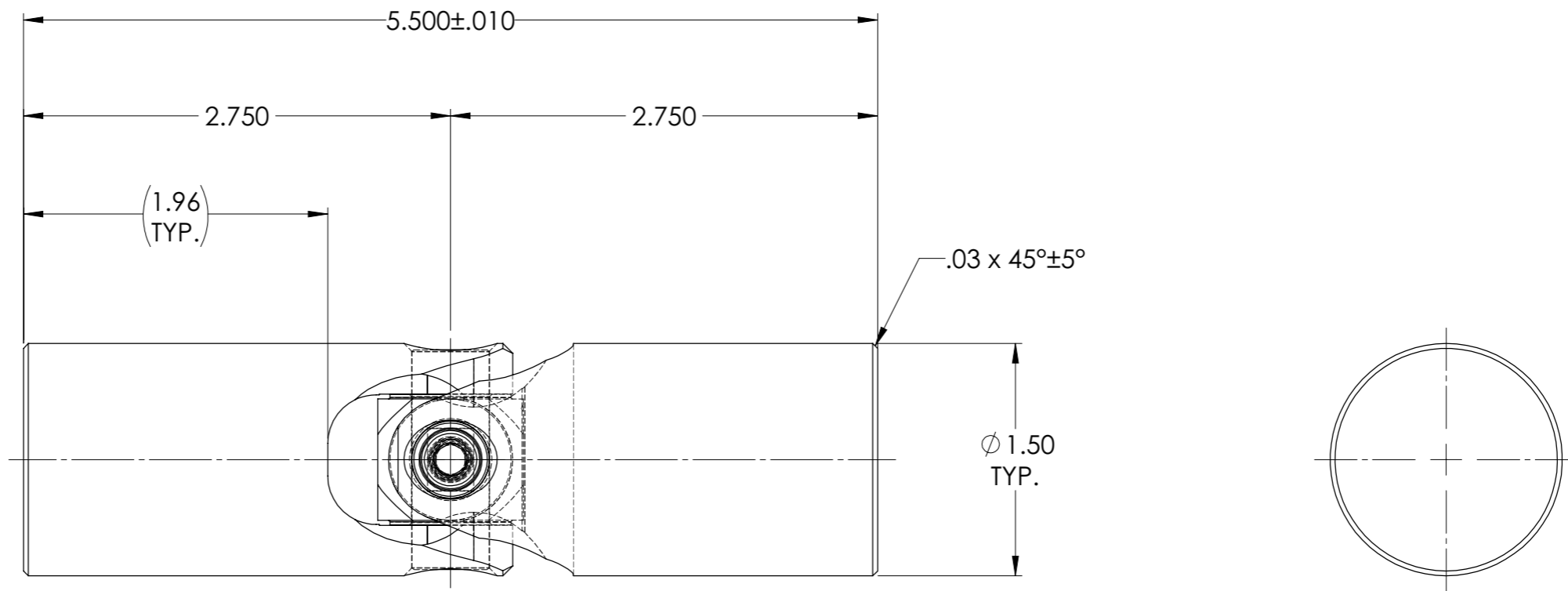
APPROVED

REVISIONS				
ZONE	REV.	DESCRIPTION	DATE	APPROVED

INFORMATION IN THIS DRAWING
PROVIDED FOR REFERENCE ONLY



SCALE 1 : 1



NOTE(s), UNLESS OTHERWISE SPECIFIED.

- 1 MARK ASSEMBLY w/ "BELDEN" LOGO, PART NUMBER, REVISION LEVEL (IF ANY), DATE OF MANUFACTURE, & BELDEN JOB No.
- (2) LUBRICATE WITH LUBRIPLATE® PRODUCT No. 3000 NLGI GRADE 2, AW/EP, MOLY-LITHIUM GREASE.
- (3) REF., MAXIMUM OPERATING ANGLE: 25°.
- (4) REF., ULTIMATE (BREAKING) TORQUE: 15,000 IN-LBS (EST).
- (5) FULLY SEAT ϕ 1/4-28 SOCKET HEAD CAP SCREW & TORQUE TO 204-228 IN-LBS (17-19 FT-LBS) RIVET END I.A.W. BEL-ES-0005.

DO NOT SCALE DRAWING

UNLESS OTHERWISE SPECIFIED CHAMFER ALL HOLES BREAK ALL SHARP CORNERS DE-BURR ALL FEATURES TURNED SURFACES: \checkmark 63/ MILLED SURFACES: \checkmark 125/ PROPRIETARY AND CONFIDENTIAL <small>THE INFORMATION CONTAINED IN THIS DRAWING IS THE SOLE PROPERTY OF BELDEN UNIVERSAL. ANY REPRODUCTION IN PART OR AS A WHOLE WITHOUT THE WRITTEN PERMISSION OF BELDEN UNIVERSAL IS PROHIBITED.</small>	STANDARD TOLERANCES, UNLESS OTHERWISE SPECIFIED DIMENSIONS ARE IN INCHES [mm] ANGULAR MACHINED: $\pm 1.0^\circ$ FRACTIONAL: $\pm .015"$ TWO PLACE DECIMAL: $\pm .010"$ THREE PLACE DECIMAL: $\pm .005"$ FOUR PLACE DECIMAL: $\pm .0005"$ CONCENTRICITY: $.0025"$ T.I.R. ALL HOLES TO BE LOCATED ON CENTERLINE (ϕ) WITHIN $.005"$ T.I.R. INTERPRET GEOMETRIC TOLERANCES I.A.W. ASME Y14.5	MATERIAL ALLOY STEEL HEAT TREAT SEE DETAIL DRAWINGS FINISH NONE	DRAWN RNK	INITIALS RNK	DATE 17NOV98	Belden Universal www.beldenuniversal.com TITLE: ASSEMBLY, UNIVERSAL JOINT SIZE A	
			CHECKED RNK	ENG APPR. RNK	DATE 17NOV98		DWG. NO. UJ-LV1500
			MFG APPR.	QC APPR.	COMMENTS:		REV E
			SCALE: 1.5:1 WT (Lbs): 2.417 SHEET 1 OF 2				