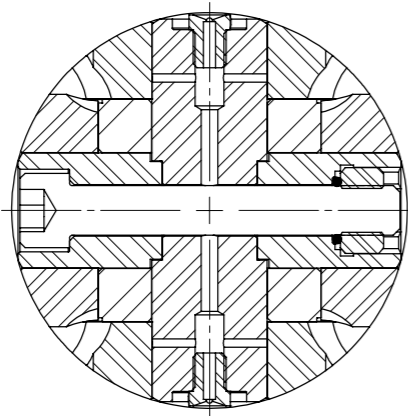
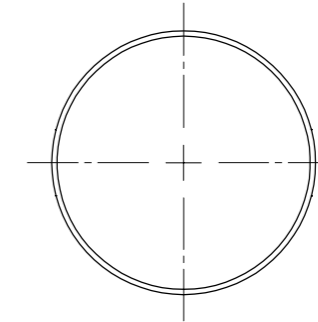
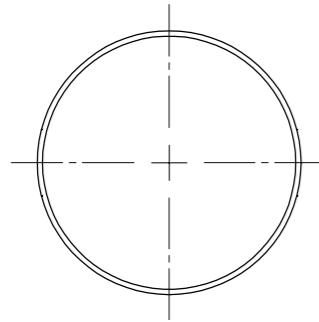
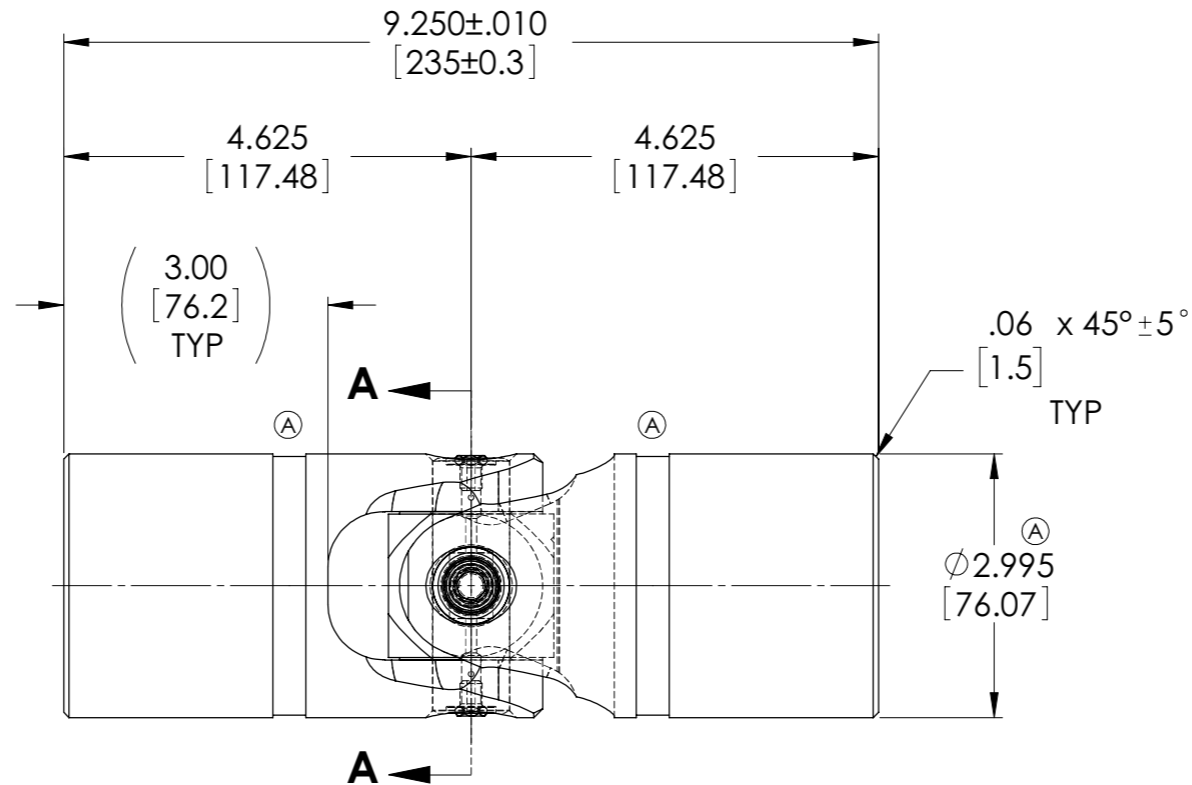
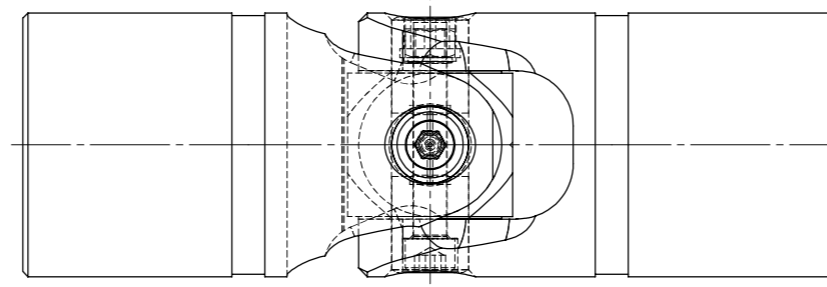
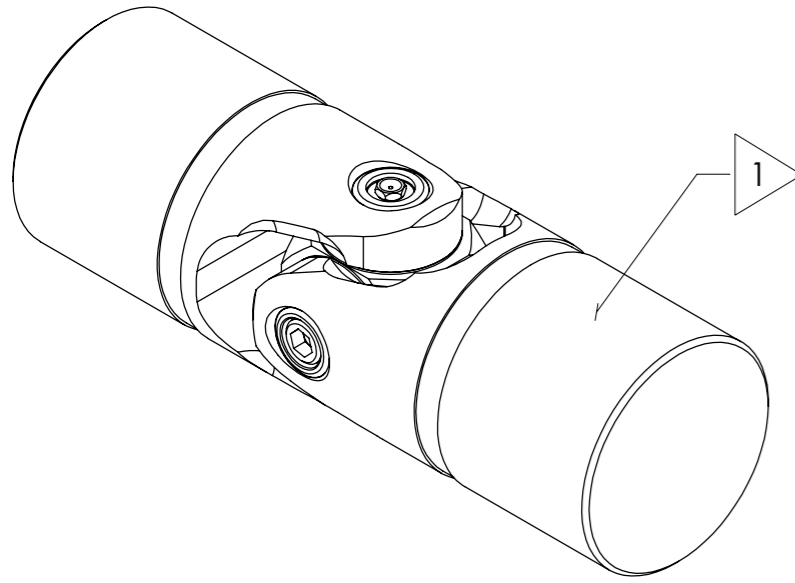


APPROVED

REVISIONS				
ZONE	REV.	DESCRIPTION	DATE	APPROVED

INFORMATION IN THIS DRAWING
PROVIDED FOR REFERENCE ONLY



SECTION A-A ⓑ
SCALE 1:1

NOTE(s), UNLESS OTHERWISE SPECIFIED.

- ⓓ 1 MARK ASSEMBLY w/ "BELDEN" LOGO, PART NUMBER, REVISION, DATE OF MANUFACTURE (MO/YR) & BELDEN JOB No.
- ⓓⓐ (2) TORQUE ϕ 3/8-24 SOCKET HEAD CAP SCREW TO 35 FT-LBS.
- (3) LUBRICATE w/ LUBRIPLATE PRODUCT No. 3000, NLGI GRADE 2, AW/EP, MOLY-LITHIUM GREASE.
- (4) REFERENCE, UNIVERSAL JOINT CAPABLE OF OPERATING AT ANY ANGLE UP TO AND INCLUDING 25°.
- (5) REFERENCE, ULTIMATE (BREAKING) TORQUE: 73,000 IN-LBS.

DO NOT SCALE DRAWING

UNLESS OTHERWISE SPECIFIED CHAMFER ALL HOLES BREAK ALL SHARP CORNERS DE-BURR ALL FEATURES TURNED SURFACES: $\sqrt{63}$ MILLED SURFACES: $\sqrt{125}$ PROPRIETARY AND CONFIDENTIAL THE INFORMATION CONTAINED IN THIS DRAWING IS THE SOLE PROPERTY OF BELDEN UNIVERSAL. ANY REPRODUCTION IN PART OR AS A WHOLE WITHOUT THE WRITTEN PERMISSION OF BELDEN UNIVERSAL IS PROHIBITED.	STANDARD TOLERANCES, UNLESS OTHERWISE SPECIFIED DIMENSIONS ARE IN INCHES [mm]	MATERIAL ALLOY STEEL	INITIALS DRAWN: RNK CHECKED: RNK ENG APPR.: RNK MFG APPR.: QC APPR.:	DATE 10FEB00 10FEB00 10FEB00	Belden Universal www.beldenuniversal.com TITLE: ASSEMBLY, UNIVERSAL JOINT SIZE: A DWG. NO.: UJ-LV3000 REV: F SCALE: 1:1.5 WT (Lbs): 15.839 SHEET 1 OF 2
	ANGULAR MACHINED: $\pm 1.0^\circ$ FRACTIONAL: $\pm .015$ " TWO PLACE DECIMAL: $\pm .010$ " THREE PLACE DECIMAL: $\pm .005$ " FOUR PLACE DECIMAL: $\pm .0005$ " CONCENTRICITY: .0025" T.I.R.	HEAT TREAT SEE DETAIL DRAWINGS	COMMENTS:	COMMENTS:	
	ALL HOLES TO BE LOCATED ON CENTERLINE (ϕ) WITHIN .005" T.I.R. INTERPRET GEOMETRIC TOLERANCES I.A.W. ASME Y14.5	FINISH NONE	COMMENTS:	COMMENTS:	
	COMMENTS:	COMMENTS:	COMMENTS:	COMMENTS:	