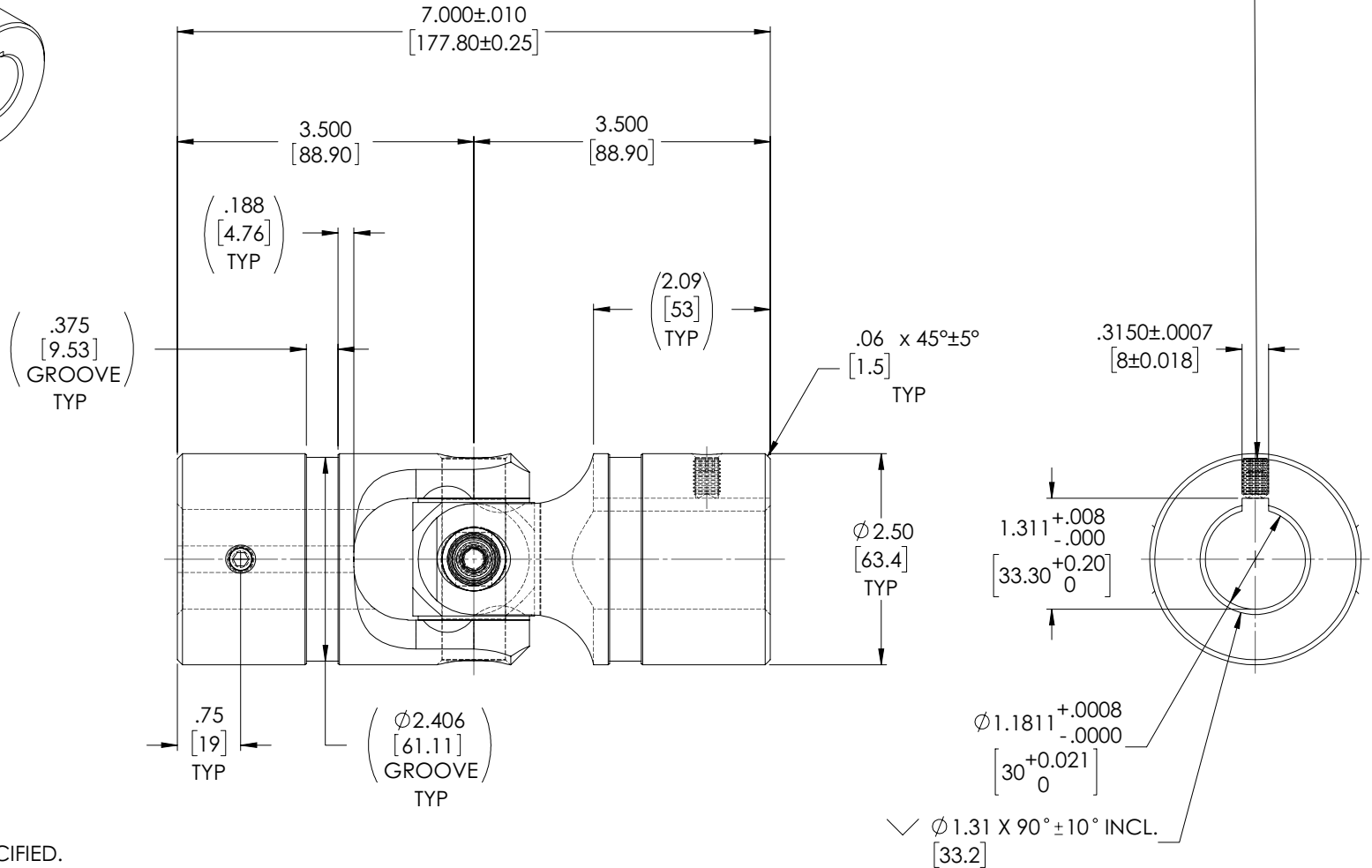
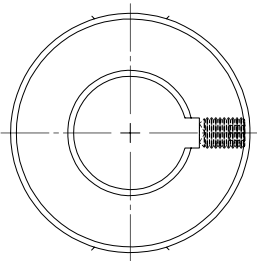
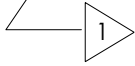
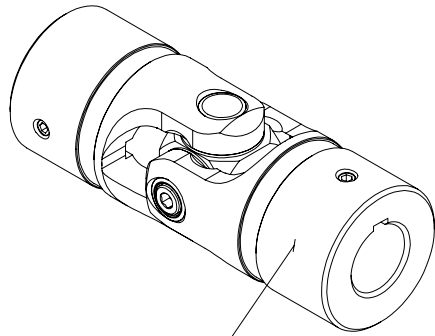


APPROVED

REVISIONS				
ZONE	REV.	DESCRIPTION	DATE	APPROVED

INFORMATION IN THIS DRAWING PROVIDED FOR REFERENCE ONLY

SOC. SET SCREW, M8x1.25 x 12mm, CUP POINT, 18-8 STAINLESS STEEL 2X



NOTE(s), UNLESS OTHERWISE SPECIFIED.

1 MARK ASSEMBLY w/ "BELDEN" LOGO, PART NUMBER, REVISION LEVEL (IF ANY), DATE OF MANUFACTURE (MO/YR). & BELDEN JOB No.

(2) LUBRICATE WITH LUBRIPLATE® PRODUCT No. 1200-2 NLGI GRADE 2, AW/EP, LITHIUM GREASE.

(3) TORQUE M8x1.25 SOCKET HEAD CAP SCREW TO 20 FT-LBS.

(4) REF., MAXIMUM OPERATING ANGLE: 45°.

(5) REF., MATERIAL: YOKES... TYPE 303 STAINLESS STEEL,
BLOCK & PINS... TYPE 416 STAINLESS STEEL,
CAP SCREW.... TYPE 18-8 STAINLESS STEEL,
HEX LOCKNUT... TYPE 18-8 STAINLESS STEEL,
SET SCREWS... TYPE 18-8 STAINLESS STEEL.

TYPICAL BOTH ENDS

DO NOT SCALE DRAWING

UNLESS OTHERWISE SPECIFIED CHAMFER ALL HOLES BREAK ALL SHARP CORNERS DE-BURR ALL FEATURES TURNED SURFACES: \checkmark 6/9 MILLED SURFACES: \checkmark 125/1 PROPRIETARY AND CONFIDENTIAL THE INFORMATION CONTAINED IN THIS DRAWING IS THE SOLE PROPERTY OF BELDEN UNIVERSAL. ANY REPRODUCTION IN PART OR AS A WHOLE WITHOUT THE WRITTEN PERMISSION OF BELDEN UNIVERSAL IS PROHIBITED.	STANDARD TOLERANCES, UNLESS OTHERWISE SPECIFIED DIMENSIONS ARE IN INCHES [mm] ANGULAR MACHINED: ±1.0° FRACTIONAL: ±.015" TWO PLACE DECIMAL: ±.010" THREE PLACE DECIMAL: ±.005" FOUR PLACE DECIMAL: ±.0005" CONCENTRICITY: .0025" T.I.R.	MATERIAL STAINLESS STEEL HEAT TREAT SEE DETAIL DRAWINGS FINISH NONE	INITIALS DATE DRAWN JP 23AUG19 CHECKED RNK 07/29/2020 ENG APPR. RNK 07/29/2020 MFG APPR. QC APPR.	Belden Incorporated www.beldenuniversal.com TITLE: ASSEMBLY, UNIVERSAL JOINT SIZE DWG. NO. REV A UJ-SS2500x30K A SCALE: 1:1 WT (Lbs): 6.762 SHEET 1 OF 2
	COMMENTS:			
	ALL HOLES TO BE LOCATED ON CENTERLINE (C) WITHIN .005" T.I.R. INTERPRET GEOMETRIC TOLERANCES I.A.W. ASME Y14.5			
	PROPRIETARY AND CONFIDENTIAL			