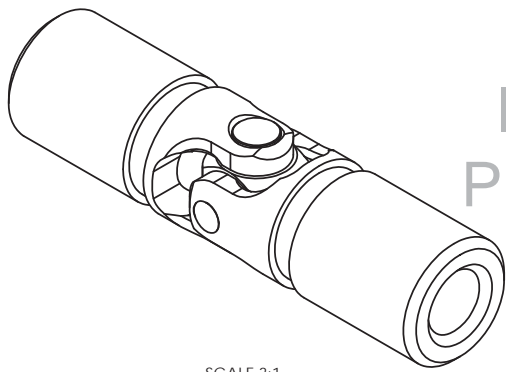
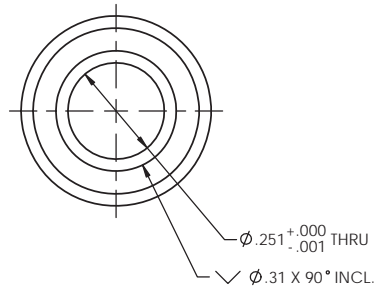
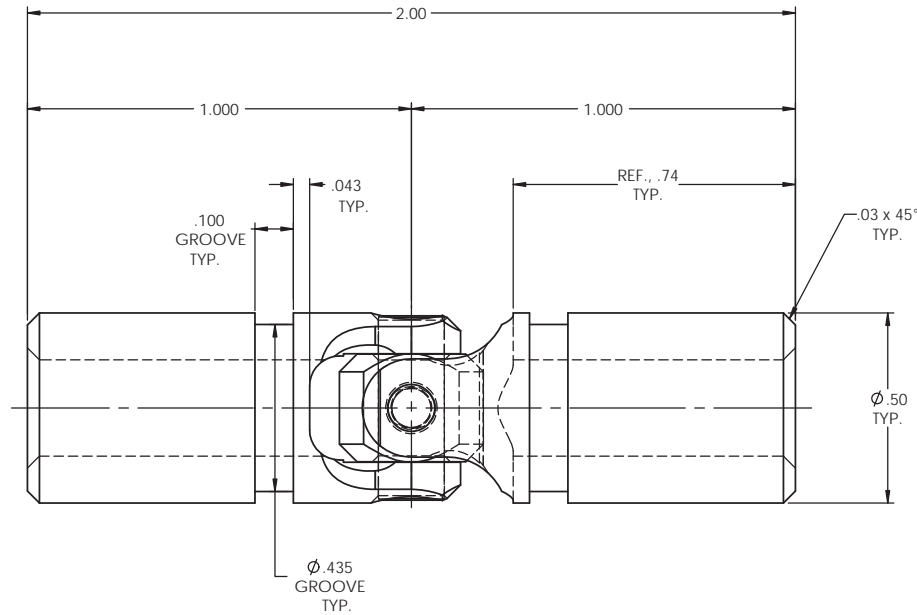


INFORMATION IN THIS DRAWING PROVIDED FOR REFERENCE ONLY



SCALE 3:1

| REVISIONS | | | | |
|-----------|------|-------------|------|----------|
| ZONE | REV. | DESCRIPTION | DATE | APPROVED |
| | | | | |



TYPICAL BOTH ENDS

NOTE(S), UNLESS OTHERWISE SPECIFIED.

- (1) UNIVERSAL JOINT IS MARKED w/ "BELDEN" LOGO, PART NUMBER / DRAWING NUMBER, REVISION LEVEL (IF ANY), DATE OF MANUFACTURE (MO/YR), AND BELDEN JOB NUMBER.
- (2) UNIVERSAL JOINT IS LUBRICATED w/ LUBRIPLATE 1200-2, NLGI GRADE 2, AW/EP, LITHIUM GREASE OR EQUIVALENT.
- (3) UNIVERSAL JOINT IS CAPABLE OF OPERATING AT ANY ANGLE UP TO AND INCLUDING 45°.
- (4) UNIVERSAL JOINT HAS STANDARD GROOVES TO ACCEPT INSTALLATION OF PROTECTIVE COVER (BOOT). BOOT AVAILABLE SEPARATELY. REFER TO BELDEN CATALOG, WEBSITE, OR CONTACT BELDEN SALES.
- (5) REFER TO BELDEN CATALOG, WEBSITE, OR CONTACT BELDEN SALES FOR TORQUE CAPACITY.
- (6) THIS DRAWING REPRESENTS A STANDARD BELDEN ITEM. CUSTOM UNIVERSAL JOINTS ARE AVAILABLE UPON REQUEST. PLEASE CONTACT BELDEN SALES.

BELDEN PART NUMBER: UJ-SS500x250

DO NOT SCALE DRAWING

| | | | | | |
|--|---|---------------------|-----------|---------|---|
| UNLESS OTHERWISE SPECIFIED CHAMFER ALL HOLES BREAK ALL SHARP CORNERS DE-BURR ALL FEATURES | STANDARD TOLERANCES, UNLESS OTHERWISE SPECIFIED DIMENSIONS ARE IN INCHES (mm) | MATERIAL | NAME | DATE | Belden Incorporated www.beldenuniversal.com |
| | | STAINLESS STEEL | JP | 09JAN12 | |
| TURNED SURFACES: $\sqrt{63}$ | ANGULAR MACHINED: $\pm 1.0^\circ$ | HEAT TREAT | CHECKED | RNK | TITLE: |
| MILLED SURFACES: $\sqrt{125}$ | FRACTIONAL: $\pm 0.15^\circ$ | SEE DETAIL DRAWINGS | ENG APPR | RNK | ASSEMBLY, UNIVERSAL JOINT |
| | TWO PLACE DECIMAL: $\pm 0.10^\circ$ | | MFG APPR | | SIZE |
| | THREE PLACE DECIMAL: $\pm 0.05^\circ$ | | D/A | | C |
| | FOUR PLACE DECIMAL: $\pm 0.005^\circ$ | | COMMENTS: | | DWG. NO. |
| | CONCENTRICITY: $\pm 0.005^\circ$ T.I.R. | | | | UJ-SS500x250 |
| PROPRIETARY AND CONFIDENTIAL THE INFORMATION CONTAINED IN THIS DRAWING IS THE SOLE PROPERTY OF BELDEN INCORPORATED. ANY REPRODUCTION IN PART OR AS A WHOLE WITHOUT THE WRITTEN PERMISSION OF BELDEN INCORPORATED IS PROHIBITED. | ALL HOLES TO BE LOCATED ON CENTERLINE (C) WITHIN .005" T.I.R. INTERPRET GEOMETRIC TOLERANCES I.A.W. ANSI Y14.5M-1992 | FINISH | | | REV |
| | | NONE | | | SCALE: 4:1 |
| | | | | | WT (Lbs): 0.076 |
| | | | | | SHEET 1 OF 2 |