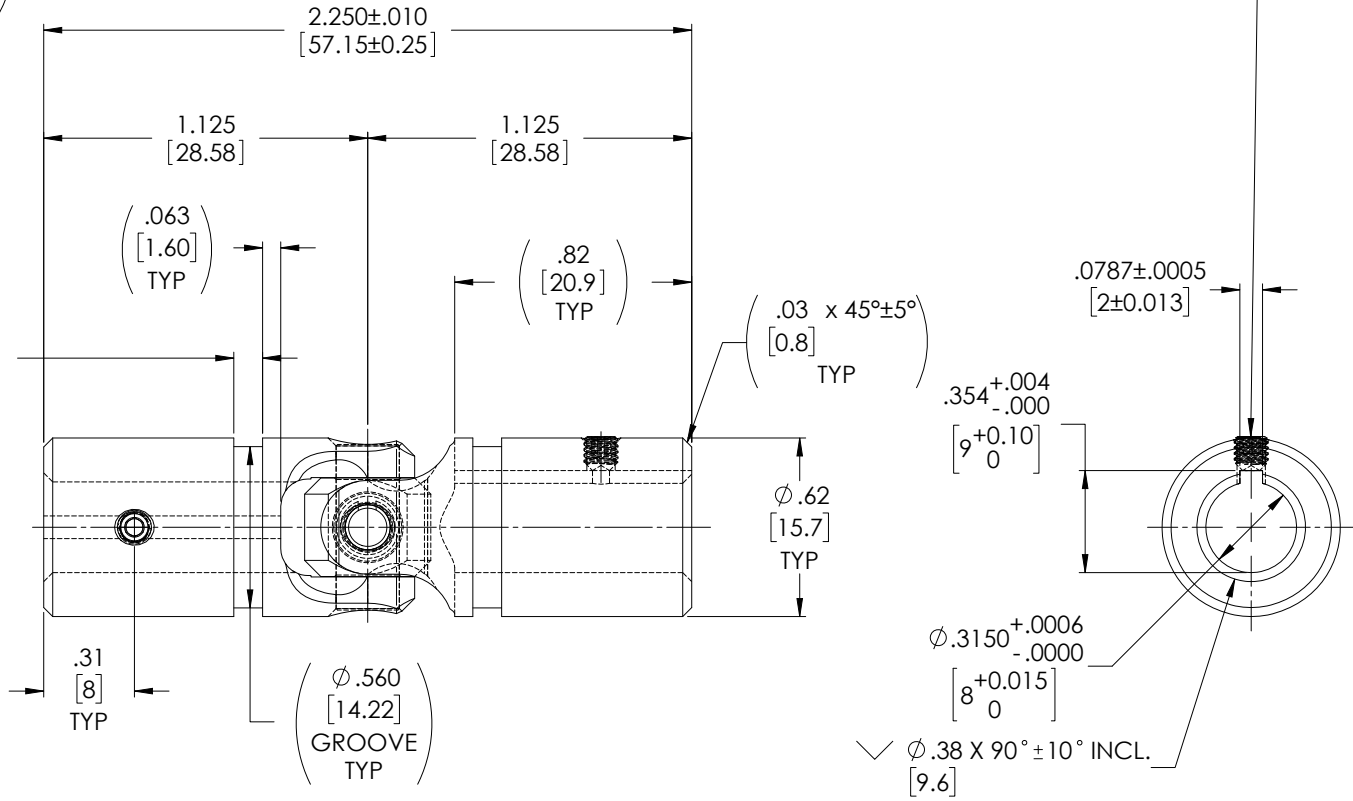
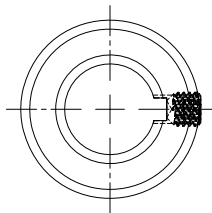
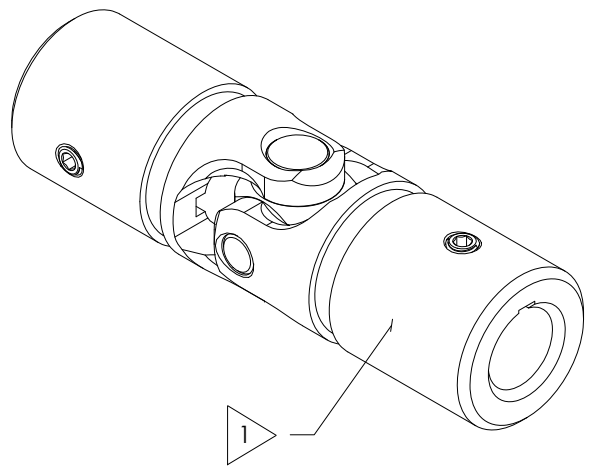


APPROVED

FOR REFERENCE ONLY

REVISIONS				
ZONE	REV.	DESCRIPTION	DATE	APPROVED
	A	INITIAL RELEASE	7/24/2019	JP

SOCKET SET SCREW, M3x0.5 x 3mm, CUP POINT, 18-8 STAINLESS ST'L 2X



TYPICAL BOTH ENDS

NOTE(s), UNLESS OTHERWISE SPECIFIED.

1 MARK ASSEMBLY w/ "BELDEN" LOGO, PART NUMBER, REVISION LEVEL (IF ANY), DATE OF MANUFACTURE & BELDEN JOB No.

(2) REFERENCE, MATERIAL: YOKES... TYPE 303 STAINLESS STEEL,
BLOCK & PINS... TYPE 416 STAINLESS STEEL,
RETAINING RING... TYPE 302 STAINLESS STEEL.

(3) LUBRICATE U-JOINT w/ LUBRIPLATE # 1200-2, NLGI GRADE 2, AW/EP,
LITHIUM GREASE OR EQUIVALENT.

(4) MAXIMUM OPERATING ANGLE: 45°

DO NOT SCALE DRAWING

UNLESS OTHERWISE SPECIFIED CHAMFER ALL HOLES BREAK ALL SHARP CORNERS DE-BURR ALL FEATURES TURNED SURFACES: $\sqrt{32}$ MILLED SURFACES: $\sqrt{125}$	STANDARD TOLERANCES, UNLESS OTHERWISE SPECIFIED	MATERIAL STAINLESS STEEL	INITIALS JP	DATE 24 JUL 19	Belden Incorporated www.beldenuniversal.com TITLE: ASSEMBLY, UNIVERSAL JOINT	
	DIMENSIONS ARE IN INCHES [mm]	HEAT TREAT SEE DETAIL DRAWINGS	DRAWN RNK	CHECKED RNK		09/09/2019
	ANGULAR MACHINED: $\pm 1.0^\circ$ FRACTIONAL: $\pm 0.15'$ TWO PLACE DECIMAL: $\pm 0.10'$ THREE PLACE DECIMAL: $\pm 0.005'$ FOUR PLACE DECIMAL: $\pm 0.0005'$ CONCENTRICITY: $\pm 0.0025'$ T.I.R.	MFG APPR.	ENG APPR.	MFG APPR.		09/16/2019
	PROPRIETARY AND CONFIDENTIAL THE INFORMATION CONTAINED IN THIS DRAWING IS THE SOLE PROPERTY OF BELDEN UNIVERSAL. ANY REPRODUCTION IN PART OR AS A WHOLE WITHOUT THE WRITTEN PERMISSION OF BELDEN UNIVERSAL IS PROHIBITED.	FINISH NONE	COMMENTS:			QC APPR.
ALL HOLES TO BE LOCATED ON CENTERLINE (C) WITHIN .005" T.I.R. INTERPRET GEOMETRIC TOLERANCES I.A.W. ASME Y14.5	SIZE A	DWG. NO. UJ-SS625x08K	REV A	SCALE: 3:1	WT (Lbs): 0.134	
				SHEET 1 OF 2		